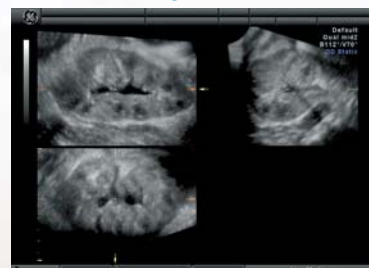


# Volume Ultrasound Volume One

Complete digital access to the Region of Interest (ROI) with a single volume sweep.

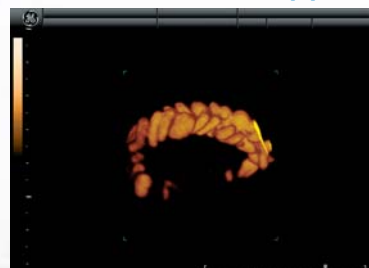
With Volume Ultrasound, you'll explore multi-dimensional images in any plane while visualizing the finest details with clarity.

**Multiplanar Mode**



Visualization of every anatomic structure in 3 orthogonal planes, allowing perfect localization in the ROI.

**3D Color/Power Doppler**



Visualization of vascularization in the ROI

**Maximum Mode**



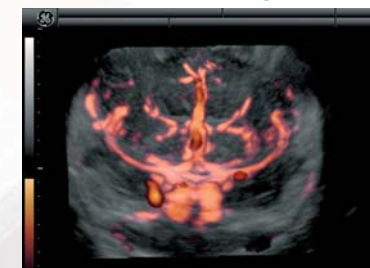
Visualization of bony structures in the ROI

**Surface Mode**



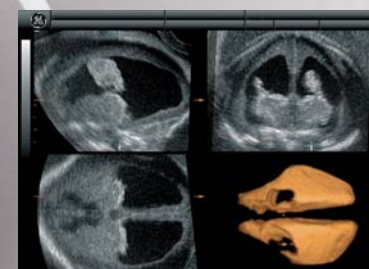
Visualization of the ROI's surface (skin for a fetus), allowing analysis of external aspect of anomalies

**GlassBody Mode**



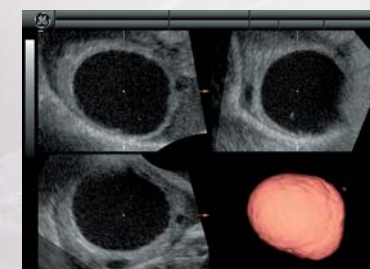
Visualization of vascular structures within the ROI with vascular and tissue information

**Inversion Mode**



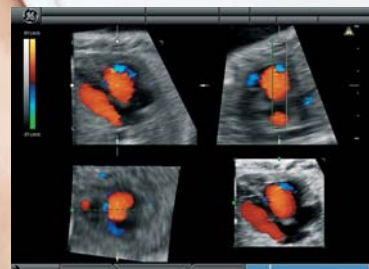
Visualization of complex hypo echoic structures including vascular flow information

**VOCAL II**



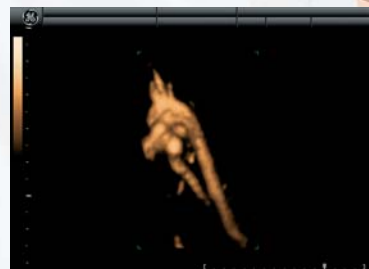
Computer aided volume analysis allowing a quick contour detection & volume calculation of complex anatomical structures

**STIC Mode**



Advanced functionality for fetal heart assessment using volume technology

**STIC Mode + B-Flow**



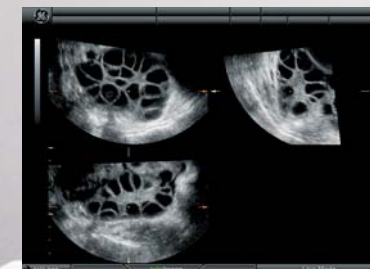
Visualization of fetal heart blood flow

**3D + B-Flow**



Visualization of blood flow in 3-dimensional way

**3D + VCI**



For perfect image resolution in multiplanar mode using volume technology

Worldwide only available on VOLUSON 730 Expert.

GE imagination at work

